

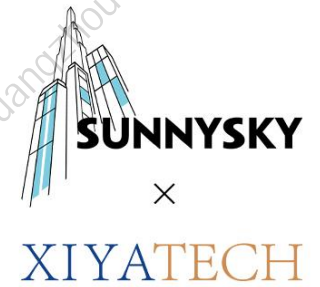
# Folding screen

## INTRODUCTION

These instructions are intended for the installer to quickly summarize the major steps of the installation and provide full detailed instructions. The installer must read the complete instructions in their entirety and rely on this document to understand all warnings, procedures, and standards.



WARNING! Do not lift or move without the proper equipment. Read, understand, and follow all lifting equipment manufacturer's instructions and safety information.

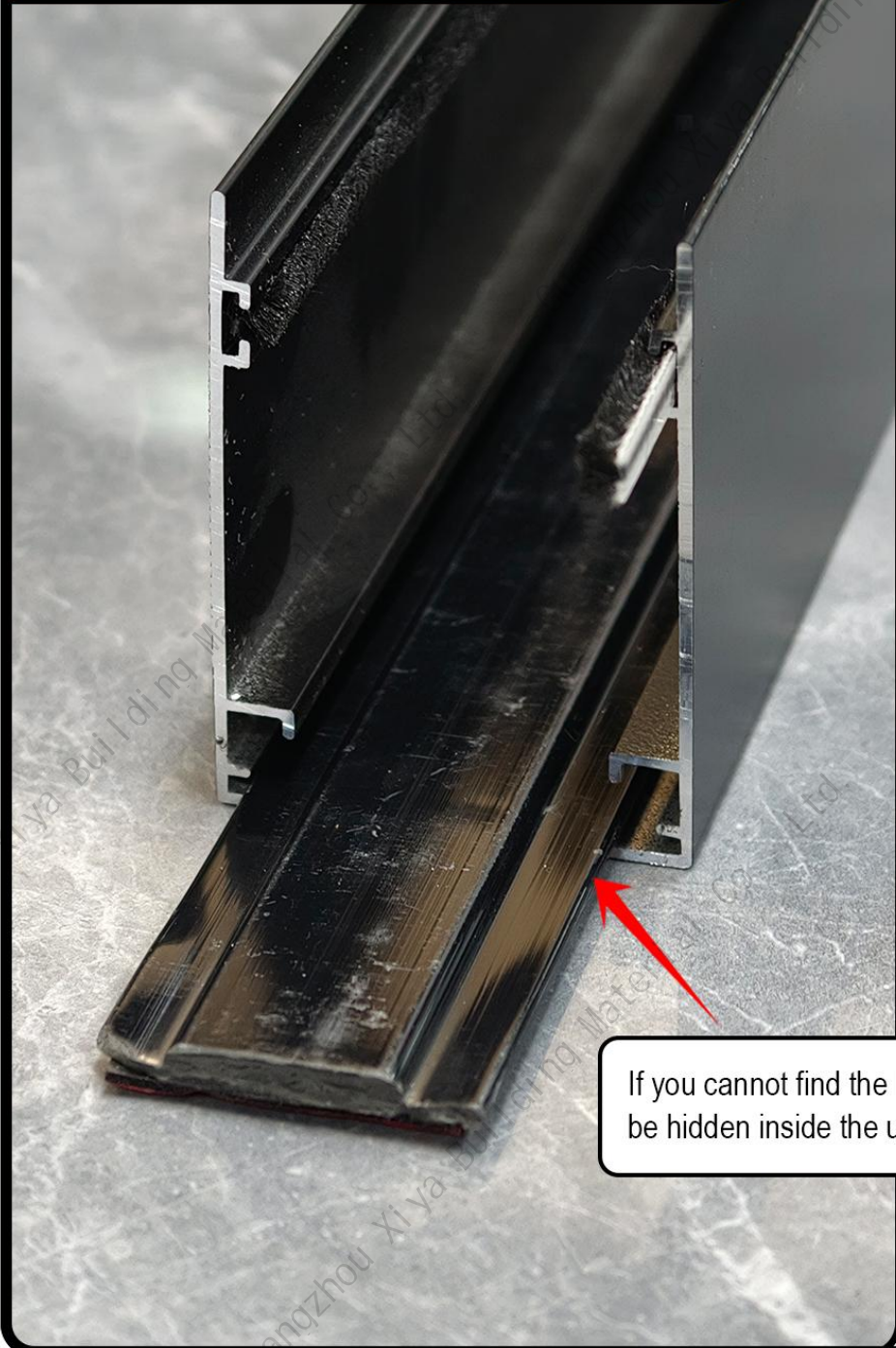


Frame Assembly and Installation Instructions  
001--2024-11-14

## 1 Prepare tools



## 2. Product details



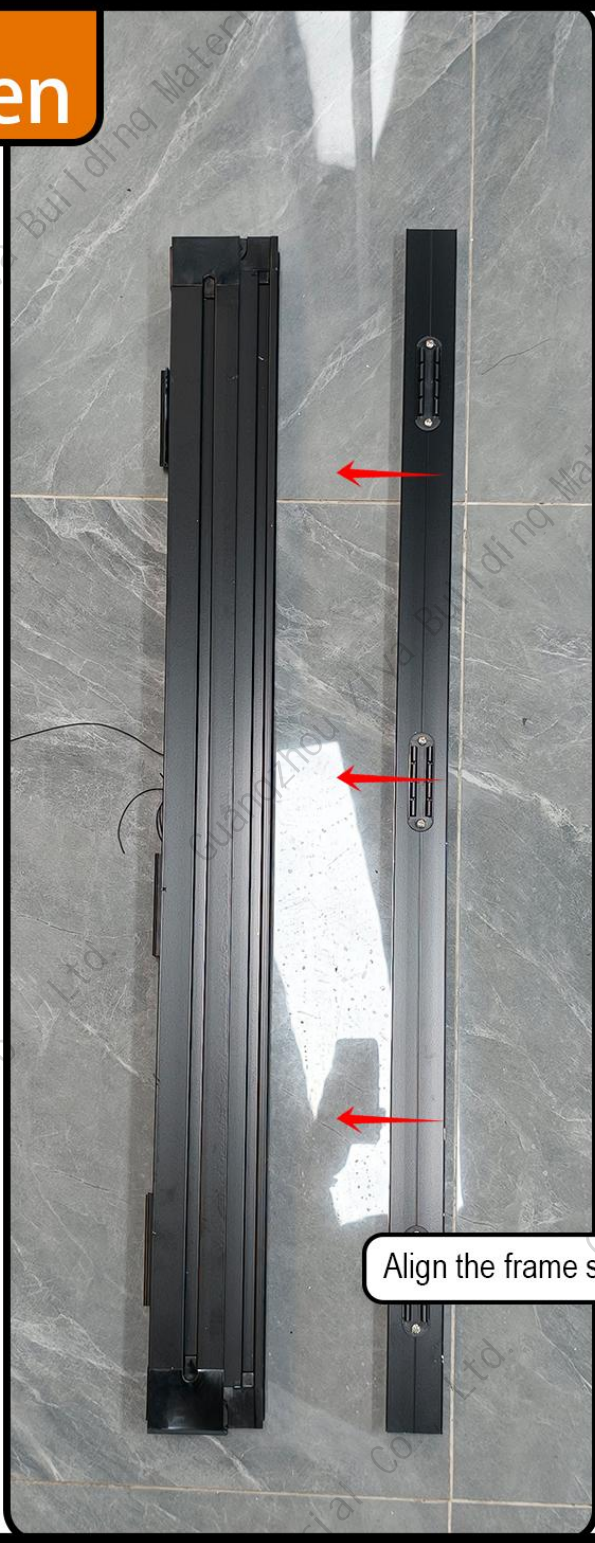
If you cannot find the lower track, it might be hidden inside the upper track



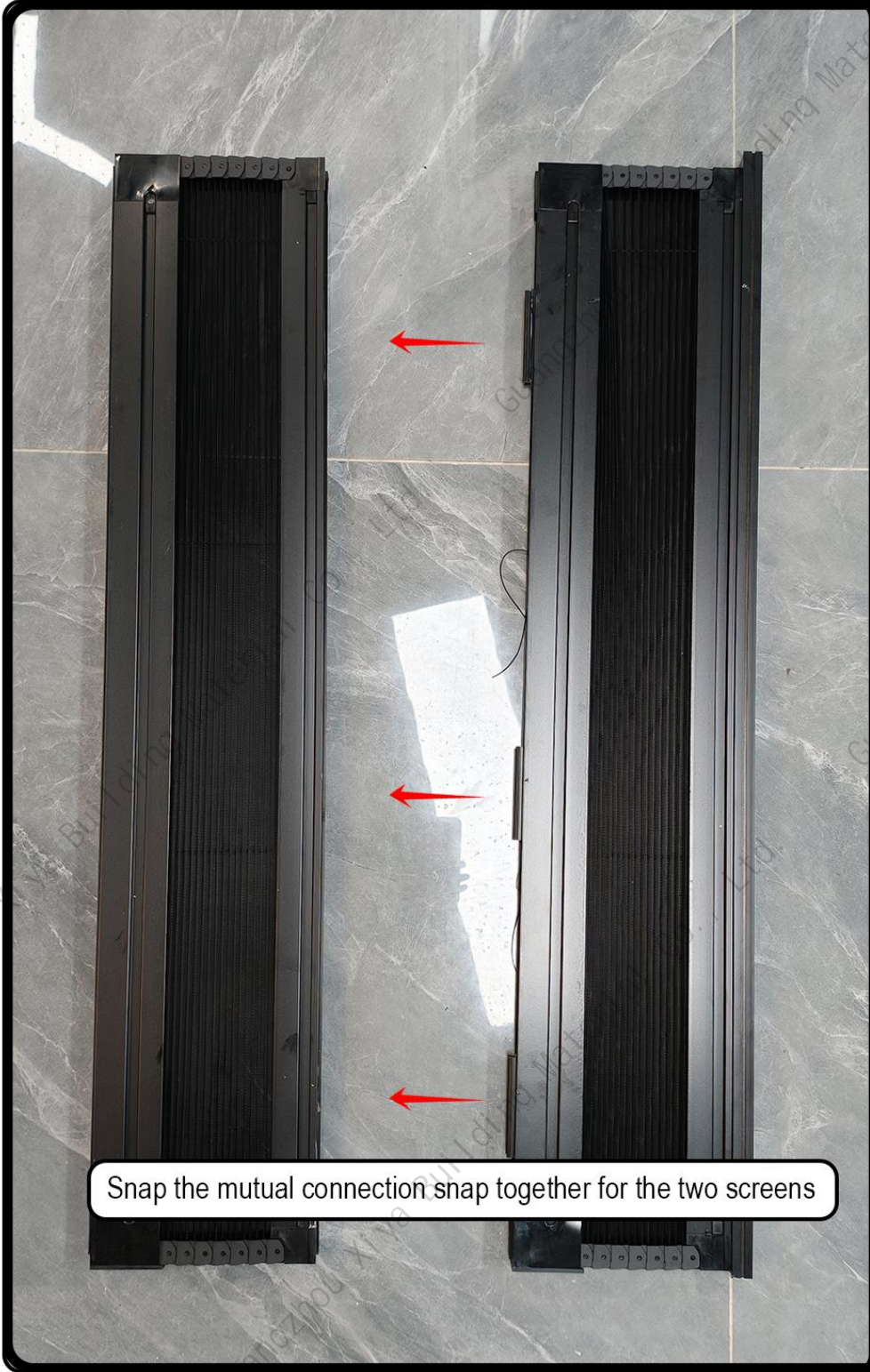
# 3. Installation Screen




If the two linked screens are not properly connected upon receipt, we will need to install them ourselves



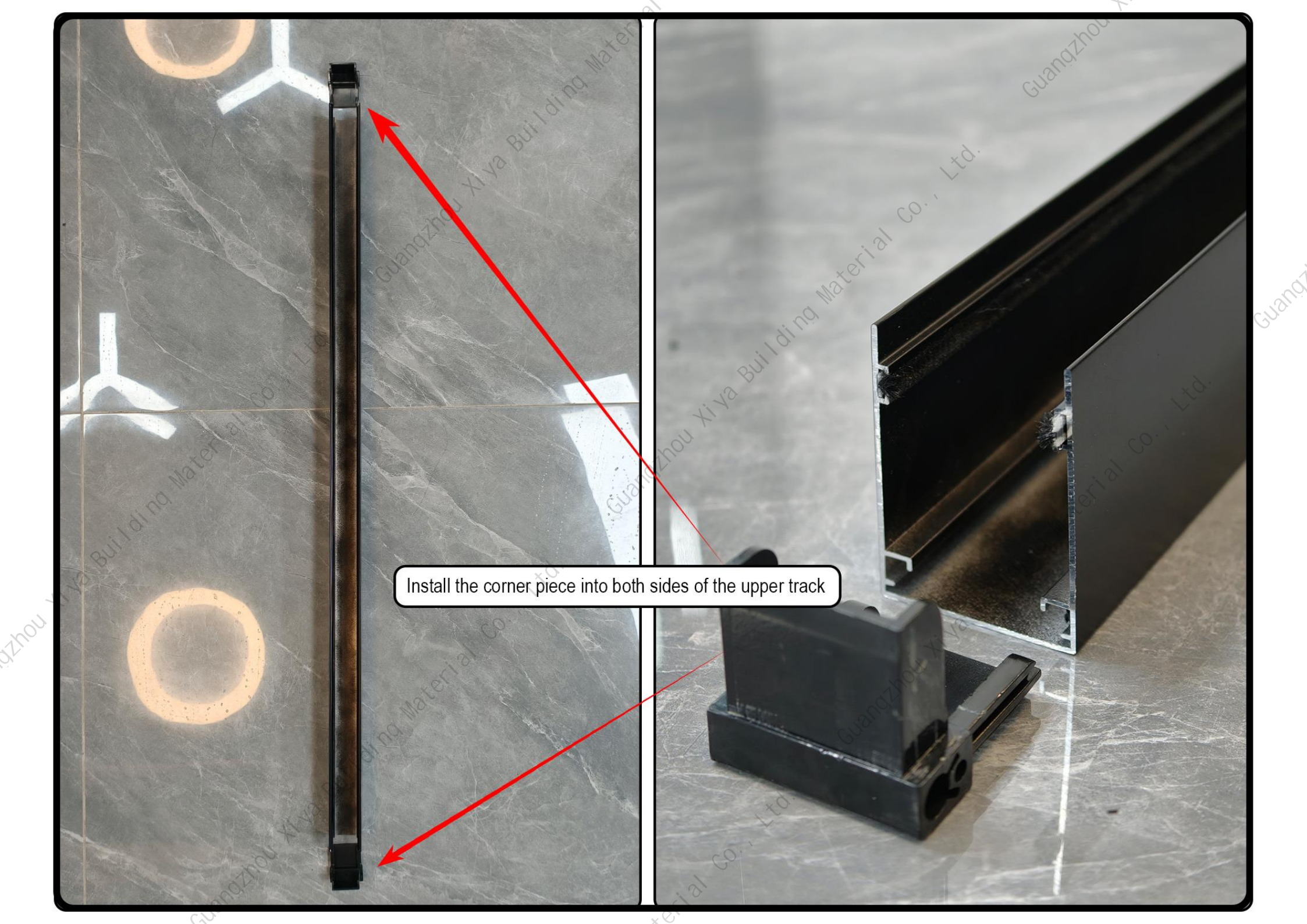
Align the frame snap to the screen and snap it on



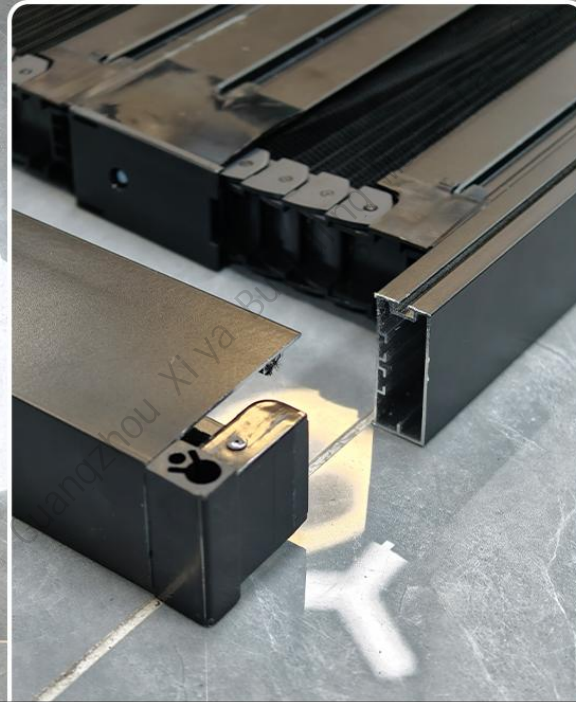
Snap the mutual connection snap together for the two screens



connected together

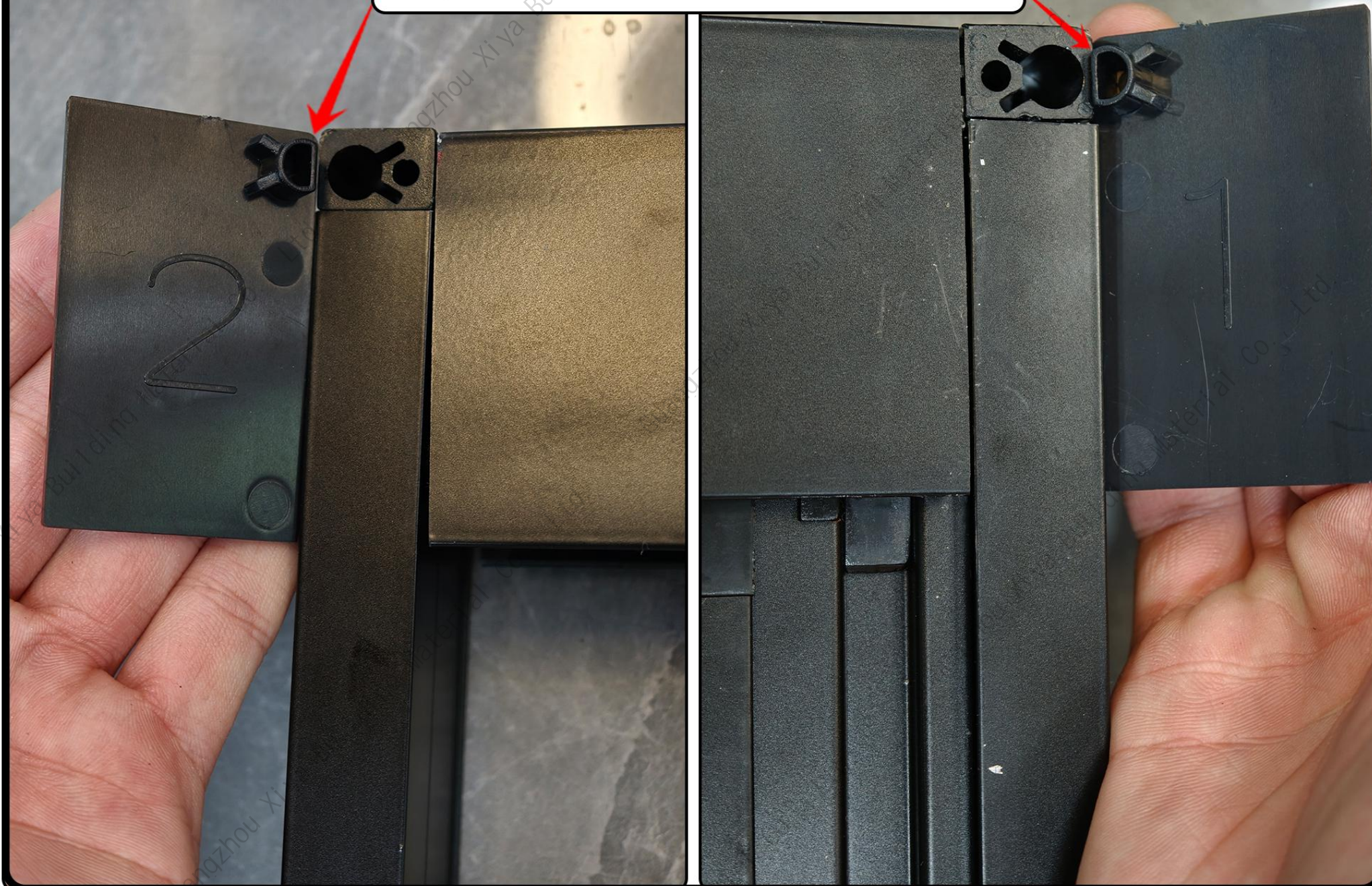


Install the corner piece into both sides of the upper track



Use a rubber mallet to gently tap the upper track onto the side frame to connect them

Snap the decorative cover onto the corner connector



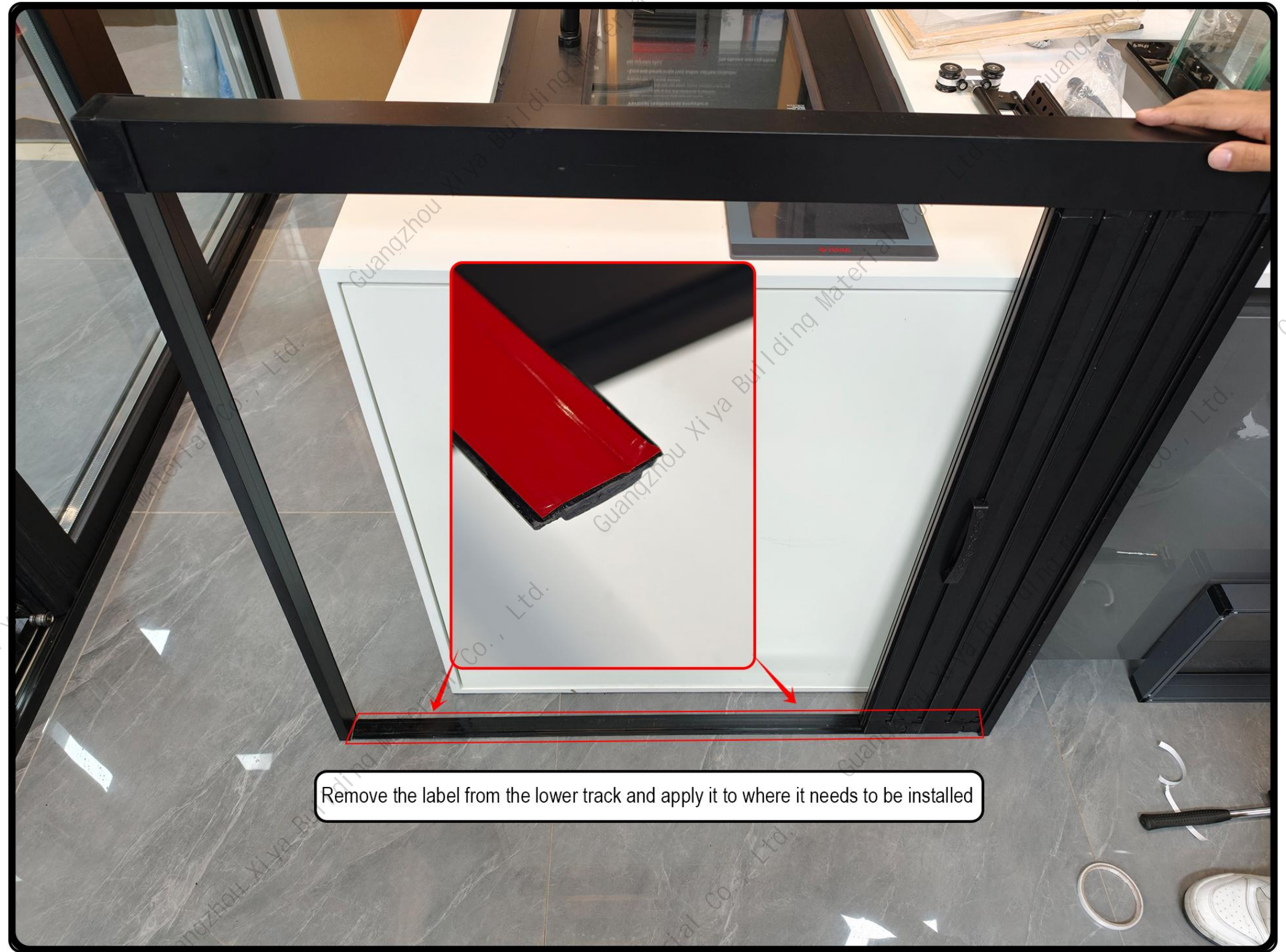
Insert the handle into the slot on the screen at the appropriate height

Use an electric screwdriver to fix the inner and outer handles with the provided self-tapping screws




After securing the screws, place the provided handle cover into the screw hole on the handle





Remove the label from the lower track and apply it to where it needs to be installed



Secure the inner side to the installation location using adhesive or glass glue